

## Color Information

# Thermo-Jet®

### Special Metallic Colors

Substrate: PVC rigid, PR-M180/23 Pentaprint, KLÖCKNER PENTAPLAST GmbH

701

\*120-34



742

\*43-80



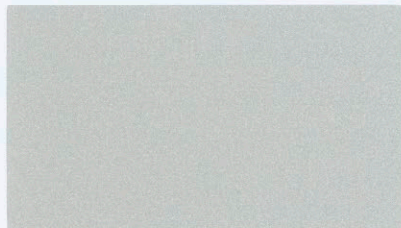
803

\*120-34



746/066

\*61-64



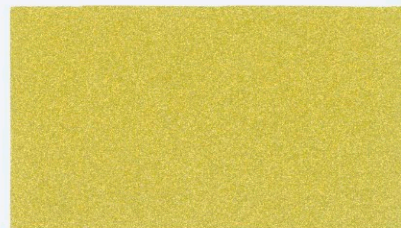
878/113

\*120-34



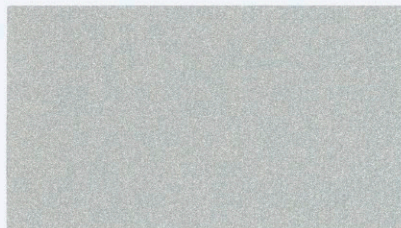
878/114

\*43-80



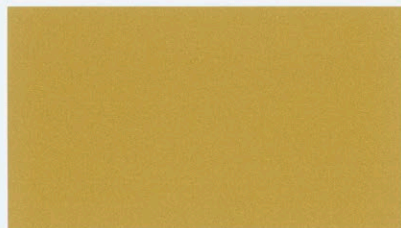
752

\*61-64



878/079

\*120-34



887

\*61-64



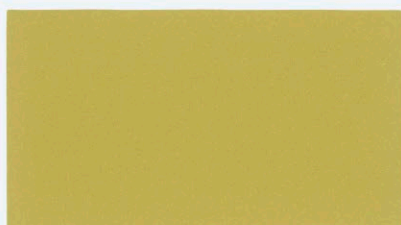
732

\*43-80



801

\*120-34



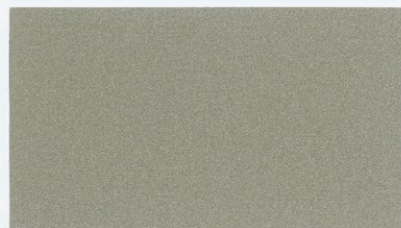
878/104

\*61-64



746/054

\*61-64



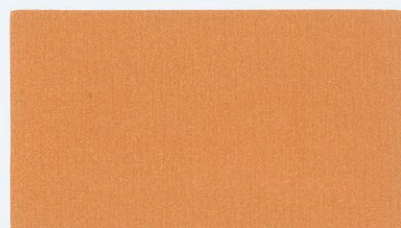
878/080

\*120-34



800/001

\*61-64



\* Mesh count stated in cm

**Pröll GmbH**  
Treuchtlinger Str. 29  
91781 Weissenburg i. Bay.  
Germany  
Phone: +49-9141-906-0  
info@proell.de  
www.proell.de

